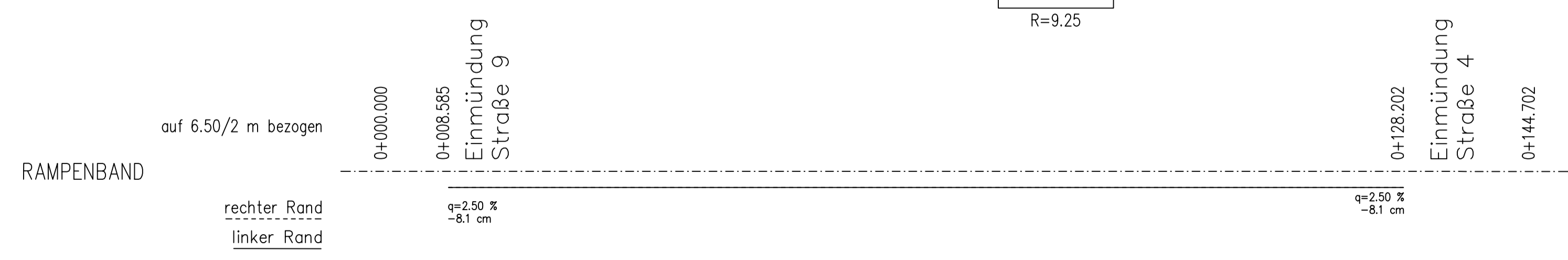
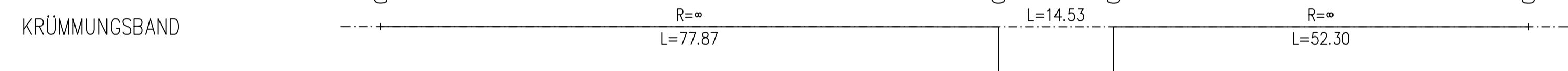


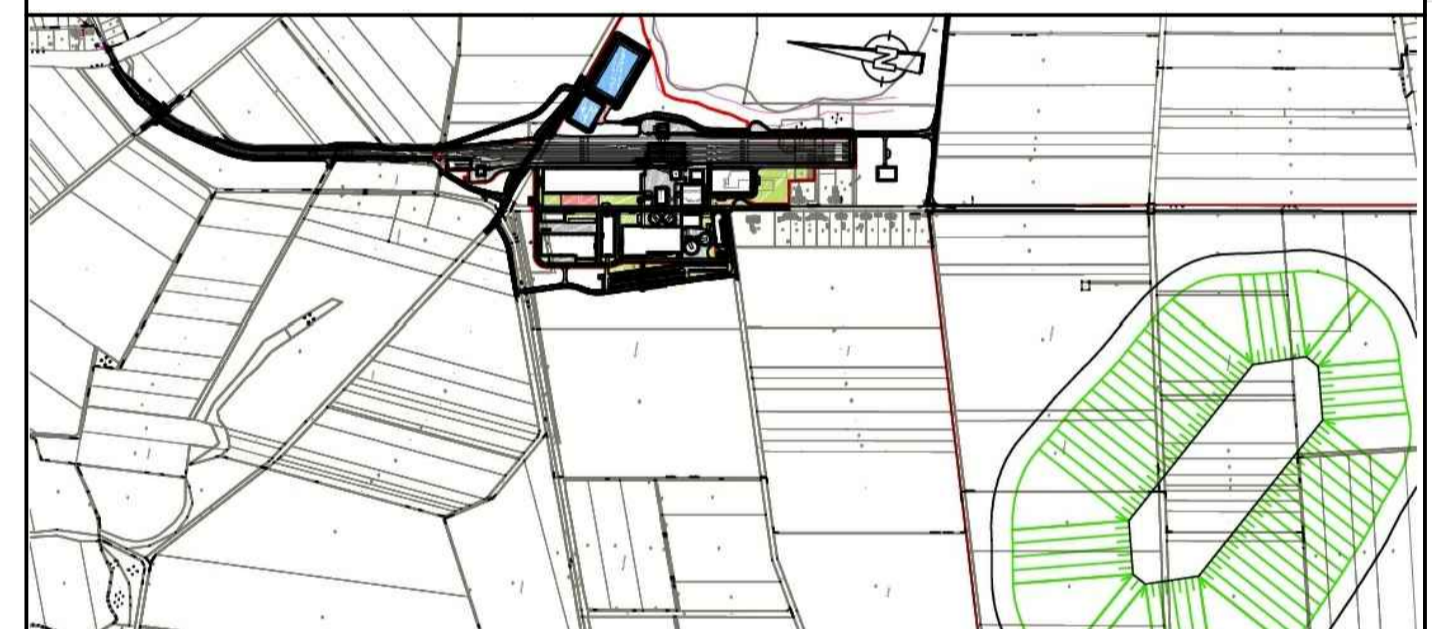
Straße 6- Achse 3454
 M = 1:500/50
 NN 70.00

Gradientenhöhen	0.000	10.000	20.000	30.000	40.000	41.765	42.999	44.233	45.467	46.701	47.935	49.169	50.403	51.637	52.871	54.105	55.339	56.573	57.807	59.041	60.275	61.509	62.743	63.977	65.211	66.445	67.679	68.913	70.147	71.381	72.615	73.849	75.083	76.317	77.551	78.785	80.019	81.253	82.487	83.721	84.955	86.189	87.423	88.657	89.891	91.125	92.359	93.593	94.827	96.061	97.295	98.529	99.763	101.000	102.234	103.468	104.702	105.936	107.170	108.404	109.638	110.872	112.106	113.340	114.574	115.808	117.042	118.276	119.510	120.744	121.978	123.212	124.446	125.680	126.914	128.148	129.382	130.616	131.850	133.084	134.318	135.552	136.786	138.020	139.254	140.488	141.722	142.956	144.190	145.424	146.658	147.892	149.126	150.360	151.594	152.828	154.062	155.296	156.530	157.764	159.000	160.234	161.468	162.702	163.936	165.170	166.404	167.638	168.872	170.106	171.340	172.574	173.808	175.042	176.276	177.510	178.744	180.000	181.234	182.468	183.702	184.936	186.170	187.404	188.638	189.872	191.106	192.340	193.574	194.808	196.042	197.276	198.510	199.744	201.000	202.234	203.468	204.702	205.936	207.170	208.404	209.638	210.872	212.106	213.340	214.574	215.808	217.042	218.276	219.510	220.744	222.000	223.234	224.468	225.702	226.936	228.170	229.404	230.638	231.872	233.106	234.340	235.574	236.808	238.042	239.276	240.510	241.744	243.000	244.234	245.468	246.702	247.936	249.170	250.404	251.638	252.872	254.106	255.340	256.574	257.808	259.042	260.276	261.510	262.744	264.000	265.234	266.468	267.702	268.936	270.170	271.404	272.638	273.872	275.106	276.340	277.574	278.808	280.042	281.276	282.510	283.744	285.000	286.234	287.468	288.702	290.000	291.234	292.468	293.702	295.000	296.234	297.468	298.702	300.000																																																																																																																																																																																																																									
Geländehöhen	71.58	71.73	71.88	72.03	72.18	72.21	72.26	72.28	72.31	72.34	72.37	72.40	72.43	72.46	72.49	72.52	72.55	72.58	72.61	72.64	72.67	72.70	72.73	72.76	72.79	72.82	72.85	72.88	72.91	72.94	72.97	73.00	73.03	73.06	73.09	73.12	73.15	73.18	73.21	73.24	73.27	73.30	73.33	73.36	73.39	73.42	73.45	73.48	73.51	73.54	73.57	73.60	73.63	73.66	73.69	73.72	73.75	73.78	73.81	73.84	73.87	73.90	73.93	73.96	73.99	74.02	74.05	74.08	74.11	74.14	74.17	74.20	74.23	74.26	74.29	74.32	74.35	74.38	74.41	74.44	74.47	74.50	74.53	74.56	74.59	74.62	74.65	74.68	74.71	74.74	74.77	74.80	74.83	74.86	74.89	74.92	74.95	74.98	75.01	75.04	75.07	75.10	75.13	75.16	75.19	75.22	75.25	75.28	75.31	75.34	75.37	75.40	75.43	75.46	75.49	75.52	75.55	75.58	75.61	75.64	75.67	75.70	75.73	75.76	75.79	75.82	75.85	75.88	75.91	75.94	75.97	76.00	76.03	76.06	76.09	76.12	76.15	76.18	76.21	76.24	76.27	76.30	76.33	76.36	76.39	76.42	76.45	76.48	76.51	76.54	76.57	76.60	76.63	76.66	76.69	76.72	76.75	76.78	76.81	76.84	76.87	76.90	76.93	76.96	76.99	77.02	77.05	77.08	77.11	77.14	77.17	77.20	77.23	77.26	77.29	77.32	77.35	77.38	77.41	77.44	77.47	77.50	77.53	77.56	77.59	77.62	77.65	77.68	77.71	77.74	77.77	77.80	77.83	77.86	77.89	77.92	77.95	77.98	78.01	78.04	78.07	78.10	78.13	78.16	78.19	78.22	78.25	78.28	78.31	78.34	78.37	78.40	78.43	78.46	78.49	78.52	78.55	78.58	78.61	78.64	78.67	78.70	78.73	78.76	78.79	78.82	78.85	78.88	78.91	78.94	78.97	79.00	79.03	79.06	79.09	79.12	79.15	79.18	79.21	79.24	79.27	79.30	79.33	79.36	79.39	79.42	79.45	79.48	79.51	79.54	79.57	79.60	79.63	79.66	79.69	79.72	79.75	79.78	79.81	79.84	79.87	79.90	79.93	79.96	79.99	80.02	80.05	80.08	80.11	80.14	80.17	80.20	80.23	80.26	80.29	80.32	80.35	80.38	80.41	80.44	80.47	80.50	80.53	80.56	80.59	80.62	80.65	80.68	80.71	80.74	80.77	80.80	80.83	80.86	80.89	80.92	80.95	80.98	81.01	81.04	81.07	81.10	81.13	81.16	81.19	81.22	81.25	81.28	81.31	81.34	81.37	81.40	81.43	81.46	81.49	81.52	81.55	81.58	81.61	81.64	81.67	81.70	81.73	81.76	81.79	81.82	81.85	81.88	81.91	81.94	81.97	82.00	82.03	82.06	82.09	82.12	82.15	82.18	82.21	82.24	82.27	82.30	82.33	82.36	82.39	82.42	82.45	82.48	82.51	82.54	82.57	82.60	82.63	82.66	82.69	82.72	82.75	82.78	82.81	82.84	82.87	82.90	82.93	82.96	82.99	83.02	83.05	83.08	83.11	83.14	83.17	83.20	83.23	83.26	83.29	83.32	83.35	83.38	83.41	83.44	83.47	83.50	83.53	83.56	83.59	83.62	83.65	83.68	83.71	83.74	83.77	83.80	83.83	83.86	83.89	83.92	83.95	83.98	84.01	84.04	84.07	84.10	84.13	84.16	84.19	84.22	84.25	84.28	84.31	84.34	84.37	84.40	84.43	84.46	84.49	84.52	84.55	84.58	84.61	84.64	84.67	84.70	84.73	84.76	84.79	84.82	84.85	84.88	84.91	84.94	84.97	85.00
Stationen	0.000	10.000	20.000	30.000	40.000	41.765	42.999	44.233	45.467	46.701	47.935	49.169	50.403	51.637	52.871	54.105	55.339	56.573	57.807	59.041	60.275	61.509	62.743	63.977	65.211	66.445	67.679	68.913	70.147	71.381	72.615	73.849	75.083	76.317	77.551	78.785	80.019	81.253	82.487	83.721	84.955	86.189	87.423	88.657	89.891	91.125	92.359	93.593	94.827	96.061	97.295	98.529	99.763	101.000	102.234	103.468	104.702	105.936	107.170	108.404	109.638	110.872	112.106	113.340	114.574	115.808	117.042	118.276	119.510	120.744	121.978	123.212	124.446	125.680	126.914	128.148	129.382	130.616	131.850	133.084	134.318	135.552	136.786	138.020	139.254	140.488	141.722	142.956	144.190	145.424	146.658	147.892	149.126	150.360	151.594	152.828	154.062	155.296	156.530	157.764	159.000	160.234	161.468	162.702	163.936	165.170	166.404	167.638	168.872	170.106	171.340	172.574	173.808	175.042	176.276	177.510	178.744	180.000	181.234	182.468	183.702	184.936	186.170	187.404	188.638	189.872	191.106	192.340	193.574	194.808	196.042	197.276	198.510	199.744	201.000	202.234	203.468	204.702	205.936	207.170	208.404	209.638	210.872	212.106	213.340	214.574	215.808	217.042	218.276	219.510	220.744	222.000	223.234	224.468	225.702	226.936	228.170	229.404	230.638	231.872	233.106	234.340	235.574	236.808	238.042	239.276	240.510	241.744	243.000	244.234	245.468	246.702	247.936	249.170	250.404	251.638	252.872	254.106	255.340	256.574	257.808	259.042	260.276	261.510	262.744	264.000	265.234	266.468	267.702	268.936	270.170	271.404	272.638	273.872	275.106	276.340	277.574	278.808	280.042	281.276	282.510	283.744	285.000	286.234	287.468	288.702	290.000	291.234	292.468	293.702	295.000	296.234	297.468	298.702	300.000																																																																																																																																																																																																																									



± 0.00 ± 71.50 m ü. NN

Index	Bemerkung / Änderung	Datum	Name



Bauvorhaben	Hartsalzwerk Siegfried-Giesen	Planungsstand	Bergrechtliches Planfeststellungsverfahren
Projektsteuerung	 K+S KALI GmbH Projektgruppe SG	Projektgruppe SG Kardinal-Bertram-Straße 1 31134 Hildesheim Tel.: 05121/10299-0 Fax: 05121/10299-29 Datum/Unterschrift	
Bauherr	 K+S Aktiengesellschaft Kassel	Beauftragt: Projektgruppe SG Kardinal-Bertram-Straße 1 31134 Hildesheim Tel.: 05121/10299-0 Fax: 05121/10299-29 Datum/Unterschrift	
Planung	 ASSMANN BERATEN + PLANEN GmbH	Nordstraße 23 38106 Braunschweig Tel.: 0531 / 3901-0 Fax: 0531 / 3901-110 Datum/Unterschrift	
Planerstellung	Längsschnitt Straße 6	Unterlage	E-2.7
		Blatt-Nr.	XXXXXX
gezeichnet	Datum: 26.02.2014	Name	Unterschrift
geprüft	Datum: 26.02.2014	Reckling	
Maßstab	1:500/50	Sauer	
		Zeichnungs-Nr.	SG-XX-XXX.00-2013-02-7033-00
Aufgestellt:	Kassel, Datum		
K+S Aktiengesellschaft			
	Name, Funktion		