

Straße 2 - Achse 3110  
 M = 1:500/50  
 NN 68.00

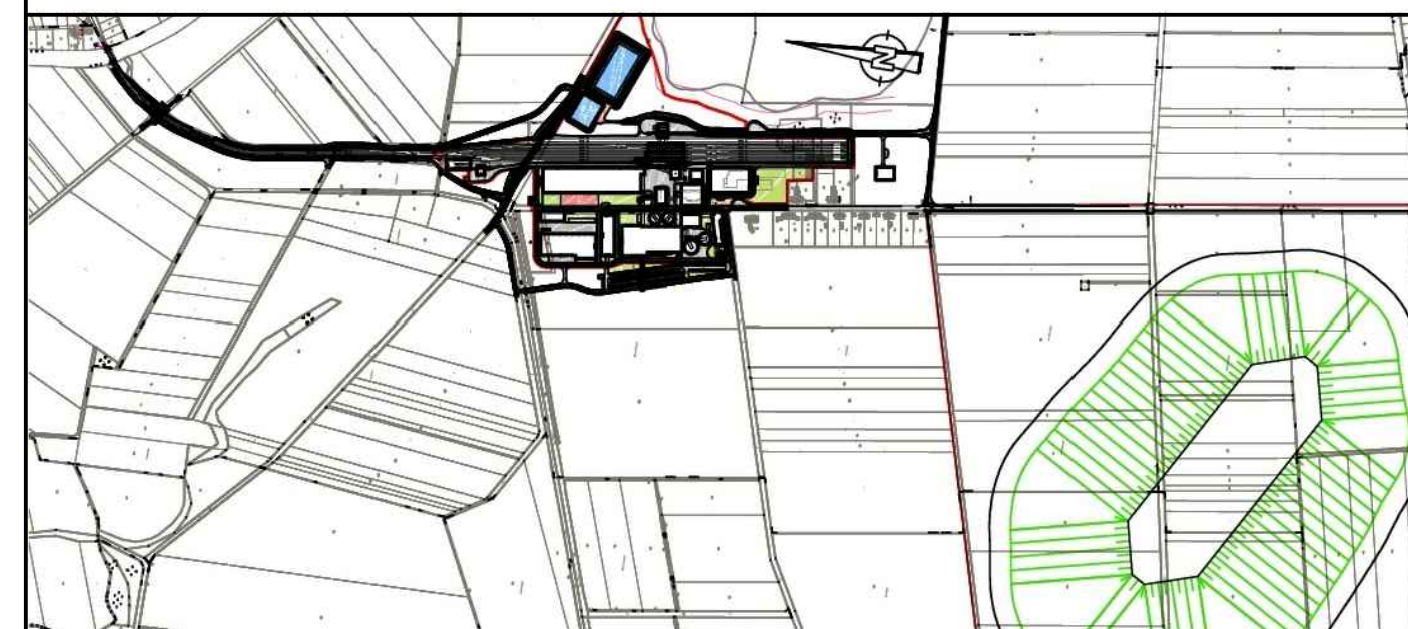
| Station   | Gradientenhöhen | Geländehöhen |
|-----------|-----------------|--------------|
| 0+000.000 | 69.15           | 70.81        |
| 10.000    | 69.05           | 70.82        |
| 15.340    | 69.00           | 70.83        |
| 17.340    | 68.99           | 70.83        |
| 20.000    | 68.99           | 70.83        |
| 22.340    | 68.99           | 70.83        |
| 30.000    | 69.03           | 70.85        |
| 40.000    | 69.03           | 70.87        |
| 44.340    | 69.00           | 71.02        |
| 46.340    | 68.99           | 71.03        |
| 50.000    | 68.99           | 71.05        |
| 56.340    | 69.08           | 71.11        |
| 61.340    | 69.15           | 71.15        |
| 66.340    | 69.28           | 71.19        |
| 70.000    | 69.39           | 71.23        |
| 80.000    | 69.69           | 71.32        |
| 80.000    | 69.99           | 71.42        |
| 80.000    | 70.29           | 71.50        |
| 6.408     | 70.49           | 71.54        |
| 10.000    | 70.59           | 71.60        |
| 20.000    | 70.89           | 71.76        |
| 20.875    | 70.92           | 71.78        |
| 30.000    | 71.19           | 72.00        |
| 40.000    | 71.49           | 72.24        |
| 50.000    | 71.79           | 72.43        |
| 60.000    | 72.09           | 72.61        |
| 70.000    | 72.39           | 72.78        |
| 80.000    | 72.69           | 73.03        |
| 90.000    | 72.99           | 73.25        |
| 0.000     | 73.20           | 73.47        |
| 10.000    | 73.59           | 73.63        |
| 11.083    | 73.62           | 73.64        |
| 15.488    | 73.71           | 73.73        |
| 18.511    | 73.81           | 73.79        |
| 20.000    | 73.81           | 73.81        |
| 30.000    | 73.94           | 73.92        |
| 40.000    | 74.06           | 74.05        |
| 50.000    | 74.19           | 74.17        |
| 60.000    | 74.31           | 74.25        |
| 70.000    | 74.44           | 74.39        |
| 80.000    | 74.56           | 74.53        |
| 90.000    | 74.69           | 74.67        |
| 0.000     | 74.81           | 74.81        |
| 10.000    | 74.84           | 74.87        |
| 20.000    | 75.05           | 74.93        |
| 30.000    | 75.19           | 74.99        |
| 40.000    | 75.31           | 75.30        |
| 50.000    | 75.44           | 75.50        |
| 60.000    | 75.56           | 75.56        |
| 70.000    | 75.69           | 75.65        |
| 80.000    | 75.75           | 75.81        |
| 82.179    | 75.81           | 75.84        |
| 88.000    | 75.84           | 75.85        |
| 91.179    | 75.85           | 75.85        |
| 0.000     | 76.06           | 76.06        |
| 2.015     | 76.09           | 76.09        |
| 10.000    | 76.19           | 76.19        |
| 20.000    | 76.31           | 76.31        |
| 30.000    | 76.44           | 76.44        |
| 40.000    | 76.56           | 76.56        |
| 43.793    | 76.61           | 76.61        |
| 50.000    | 76.69           | 76.69        |
| 60.000    | 76.81           | 76.81        |
| 60.794    | 76.82           | 76.82        |
| 70.000    | 76.92           | 76.92        |
| 80.000    | 77.06           | 77.06        |
| 90.000    | 77.19           | 77.19        |
| 93.875    | 77.23           | 77.23        |
| 0.000     | 77.29           | 77.29        |

KRÜMMUNGSBAND: R=90.68, R=78.93, L=15.73, R=72.58, L=14.47, R=281.14, R=180.00, L=41.74, A=81.93, L=16.95, R=330.00, L=32.97, R=62.81

RAMPENBAND: rechter Rand, linker Rand, g=2.50%, b=25.99m, b=2.85m, -65.0cm, -7.1cm, g=2.55%, b=2.85m, -7.1cm

± 0.00 ± 71.50 m ü. NN

| Index | Bemerkung / Änderung | Datum | Name |
|-------|----------------------|-------|------|
|       |                      |       |      |
|       |                      |       |      |
|       |                      |       |      |



|  |  |
|--|--|
| Bauherr<br><b>Hartsalzwerk Siegfried-Giesen</b>              | Planungsstand<br>Berechtigtes<br>Planfeststellungsverfahren  |
| Projektsteuerung<br><b>K+S KALI GmbH</b><br>Projektgruppe SG | Projektgruppe SG<br>Kardinal-Bertram-Straße 1<br>31134 Hildesheim<br>Tel.: 0512110299-0 Fax: 0512110299-29<br>Datum/Unterschrift             |
| Bauherr<br><b>K+S Aktiengesellschaft</b><br>Kassel           | Beauftragt: Projektgruppe SG<br>Kardinal-Bertram-Straße 1<br>31134 Hildesheim<br>Tel.: 0512110299-0 Fax: 0512110299-29<br>Datum/Unterschrift |
| Planung<br><b>ASSMANN BERATEN + PLANEN GmbH</b>              | Nordstraße 23<br>38106 Braunschweig<br>Tel.: 0531 / 3901-0<br>Fax: 0531 / 3901-110<br>Datum/Unterschrift                                     |
| Planarstellung<br>Längsschnitt Straße 2                      | Unterlage E-27<br>Blatt-Nr. XXXXXX   |
| gezeichnet<br>24.02.2014                                     | Name<br>Röding   |
| geprüft<br>24.02.2014  | Redig<br>Sauer   |
| Maßstab<br>1:500/50  | Zeichnungs-Nr.<br>SG-XX-XXX.00-2013-02-7030-00   |
| Aufgestellt:<br>Kassel, Datum<br>K+S Aktiengesellschaft      | Name, Funktion   |